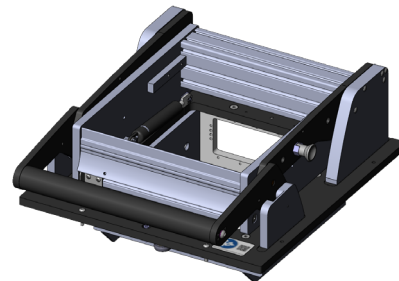




GO TO PRODUCT

- Parallel closing drive unit with mounting plate, with internal interface
- High contact force
- Modularly configurable signal transmission with internal interfaces
- Quick, easy, precise installation
- Energy-saving, shock-absorbing opening mechanism
- Can be used for various applications



Application

The drive unit serves as the opening, closing and contacting mechanism. It is used to perform the parallel contact stroke to ensure precise and reliable contacting. It is operated manually. It can be used to suit specific configurations and can be mounted quickly and easily on housings of the appropriate size.

General data

| | |
|----------------------------------|---------------------|
| Product group: | Manual drive unit |
| Main series: | ATE MAxxxx |
| Subseries: | ATE MA2xxx |
| Series: | ATE MA21xx |
| Size: | 2109 |
| Test fixture type: | With mounting plate |
| Contact stroke generation: | Manual |
| Max. interface signals: | 5 |
| Interface blocks required: | Test system side |
| Max. internal interface blocks: | 5 |
| Max. contact force: | 2000 N [7,193 ozf] |
| Approx. parallel contact stroke: | 15 mm [.59 in] |
| Min. temperature: | 10 °C [50 °F] |
| Max. temperature: | 60 °C [140 °F] |
| RoHS-compliant: | Yes |

Technical data

| | |
|-----------------------------------|--|
| Force of gas pressure springs: | 150 N (L: 100 N / R: 50 N) |
| Pressure frame opening angle: | 69 ° |
| Outer dimensions, open (WxDxH): | 320 x 363.5 x 444 mm [12.5 x 14.3 x 17.4 in] |
| Outer dimensions, closed (WxDxH): | 320 x 410.5 x 190 mm [12.5 x 16.1 x 7.48 in] |

Drive unit / overclamp

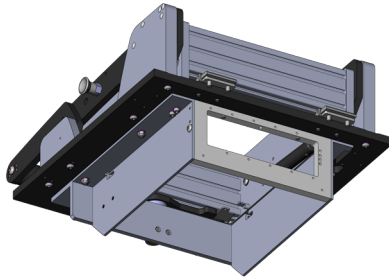
ATE MA2109

Item 39900



ingun[®]

Partner for Future Technology



INGUN Prüfmittelbau GmbH

Max-Stromeyer-Straße 162
78467, Constance, Germany
Phone +49 7531 8105-0
Customer hotline +49 7531 8105-888
Fax +49 7531 8105-65
info@ingun.com



Prices and delivery times on request.
Technical changes reserved. 05/26_GB

Learn more about
Test fixture kits

