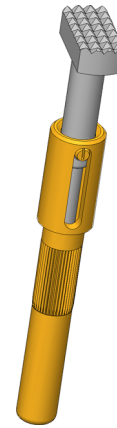


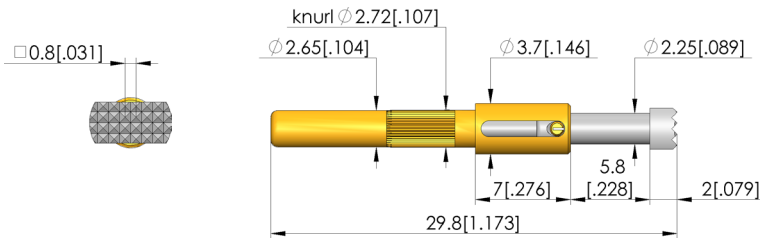


Durchgangsprüfung

Zur Überprüfung von möglichen offenen Verbindungen, Kurzschlüssen und Fehlverdrahtungen



1:1



General data

Product group:
 Sub-product group:
 Series:
 Grid:
 Contacting from:
 Magnetic:
 Installation type:
 Quick-exchange system:
 Adjustable installation height:
 Non-rotating:
 Compatible receptacle(s):
 Min. temperature:
 Max. temperature:
 RoHS-compliant:

xxx
 Non-rotating test probes
 GKS-714
 6.5 mm [255 mil]
 Post
 Yes
 Plug-in
 Yes
 No
 Yes
 KS-714
 -40 °C [-40 °F]
 80 °C [176 °F]
 Yes

Tip style data

Tip style:
 Tip diameter:
 Tip style surface:
 Tip style material:

36 serrated, right-angled
 6 mm [.236 in]
 R rhodium
 2 steel

Electrical data

Current load capacity / rated current:
 Typical resistance (Ri):

8 A
 30 mOhm

Mechanical data

Total length:
 Barrel diameter:
 Maximum stroke:
 Spring pre-load:
 Collar height:
 Spring force at working stroke:
 Recommended working stroke:

29.8 mm [1.17 in]
 2.65 mm [.104 in]
 5 mm [.196 in]
 1.67 N [6 ozf]
 07
 5 N [17.9 ozf]
 4 mm [.157 in]

Test Probe

GKS-714 236 630 R 5007

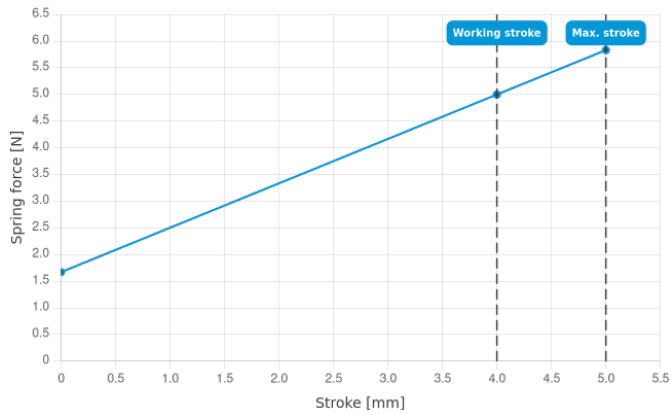
Item GKS-714-0022



GO TO PRODUCT

ingun[®]

Partner for Future Technology



INGUN Prüfmittelbau GmbH

Max-Stromeyer-Straße 162
78467, Constance, Germany
Phone +49 7531 8105-0
Customer hotline +49 7531 8105-888
Fax +49 7531 8105-65
info@ingun.com



Prices and delivery times on request.
Technical changes reserved. 06/26_GB