

Interface support

SSA-ODU-FOUR-A-MAx14

Item 112238



GO TO PRODUCT

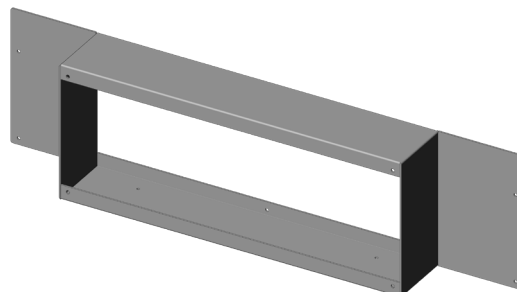
ingun[®]

Partner for Future Technology

- Interface support für ODU-MAC® Mass Interconnect interface
- Ideally designed for MA xx14 test fixtures
- Quick, easy installation on the back of the test fixture
- Reliable connection from test fixture to system interface

Application

The interface frame (SSA) is used for reliable connection of the interface (SST) to the test fixture.



General data

Product group:	Housing
Series:	SSA-MAxxxx
Type:	ODU-MAC Black-Line
Version:	12-Flex FOUR A
Accessory type:	Additional function
Scope of delivery:	Unassembled
Width:	90 mm [3.54 in]
Height:	186 mm [7.32 in]
Weight:	1.15 kg [2.53 lbs]
Min. temperature:	10 °C [50 °F]
Max. temperature:	60 °C [140 °F]
RoHS-compliant:	Yes

Compatible with

Manual test fixtures (MA):	MA xx14
Accessories:	SST-ODU-FOUR-A

Technical data

Length:	700 mm [27.5 in]
Outer dimensionS (WxDxH):	700 x 90 x 186 mm [27.5 x 3.54 x 7.32 in]

INGUN Prüfmittelbau GmbH

Max-Stromeyer-Straße 162
78467, Constance, Germany
Phone +49 7531 8105-0
Customer hotline +49 7531 8105-888
Fax +49 7531 8105-65
info@ingun.com



Prices and delivery times on request.
Technical changes reserved. 05/26_GB

Learn more about
Test fixture kits

