

# Interface support

## SSA-VPC-9025-VA4060

Item 115601



GO TO PRODUCT

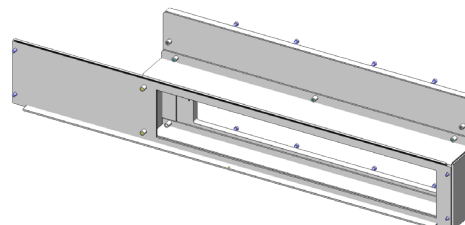
**ingun**<sup>®</sup>

Partner for Future Technology

- Interface support für VIRGINIA Panel 9025 interface
- Ideally designed for VA 4060 test fixtures
- Quick, easy installation on the back of the test fixture
- Reliable connection from test fixture to system interface

### Application

The interface frame (SSA) is used for reliable connection of the interface (SST) to the test fixture.



### General data

Product group:	Housing
Series:	SSA-VAxxxx
Type:	VPC-9025 (Virginia Panel)
Version:	VA 4060
Accessory type:	Additional function
Scope of delivery:	Unassembled
Width:	70 mm [2.75 in]
Height:	170 mm [6.69 in]
Weight:	1.6 kg [3.52 lbs]
Min. temperature:	10 °C [50 °F]
Max. temperature:	60 °C [140 °F]
RoHS-compliant:	Yes

### Compatible with

Vacuum test fixtures (VA):	VA 4060
Accessories:	SST-VPC-9025

### Technical data

Length:	645 mm [25.3 in]
Outer dimensionS (WxDxH):	645 x 70 x 170 mm [25.3 x 2.75 x 6.69 in]

### INGUN Prüfmittelbau GmbH

Max-Stromeyer-Straße 162  
78467, Constance, Germany  
Phone +49 7531 8105-0  
Customer hotline +49 7531 8105-888  
Fax +49 7531 8105-65  
info@ingun.com



Prices and delivery times on request.  
Technical changes reserved. 05/26\_GB

Learn more about  
Test fixture kits

