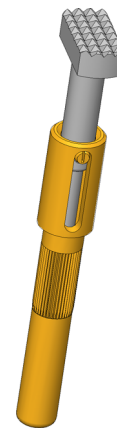


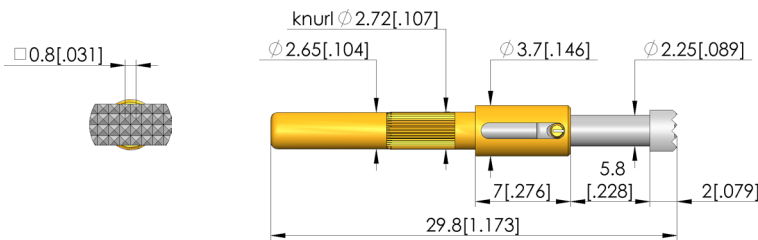


## Durchgangsprüfung

Zur Überprüfung von möglichen offenen Verbindungen, Kurzschlüssen und Fehlverdrahtungen



1:1



### General data

Product group:  
Sub-product group:  
Series:  
Grid:  
Contacting from:  
Magnetic:  
Installation type:  
Quick-exchange system:  
Adjustable installation height:  
Non-rotating:  
Compatible receptacle(s):  
Min. temperature:  
Max. temperature:  
RoHS-compliant:

xxx  
Non-rotating test probes  
GKS-714  
6.5 mm [255 mil]  
Post  
Yes  
Plug-in  
Yes  
No  
Yes  
KS-714  
-40 °C [-40 °F]  
80 °C [176 °F]  
Yes

### Tip style data

Tip style:  
Tip diameter:  
Tip style surface:  
Tip style material:

36 serrated, right-angled  
6 mm [.236 in]  
R rhodium  
2 steel

### Electrical data

Current load capacity / rated current:  
Typical resistance (Ri):

8 A  
30 mOhm

### Mechanical data

Total length:  
Barrel diameter:  
Maximum stroke:  
Spring pre-load:  
Collar height:  
Spring force at working stroke:  
Recommended working stroke:

29.8 mm [1.17 in]  
2.65 mm [.104 in]  
5 mm [.196 in]  
1 N [3.59 ozf]  
07  
3 N [10.7 ozf]  
4 mm [.157 in]

### INGUN Prüfmittelbau GmbH

Max-Stromeyer-Straße 162  
78467, Constance, Germany  
Phone +49 7531 8105-0  
Customer hotline +49 7531 8105-888  
Fax +49 7531 8105-65  
info@ingun.com

