

Receptacle

KS-626 M6 M6-RF

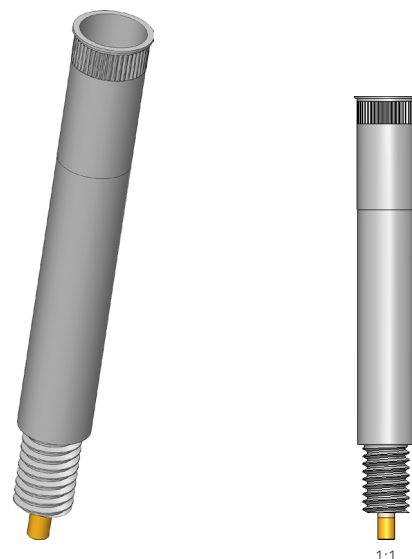
Item KS-626M6M6-RF



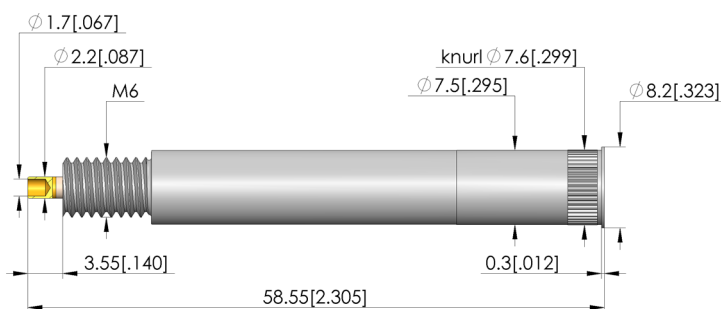
GO TO PRODUCT

ingun[®]

Partner for Future Technology



1:1



General data

Product group:
Series:
Sub-series:
Type of receptacle connection:
Press ring:
Surface area:
Collar diameter:
Collar height:
Knurl:
Vacuum-tight:
RoHS-compliant:

Receptacles (KS): KS-626
Plug / open: No
Surface area: Gold
Collar diameter: 8.2 mm [.322 in]
Collar height: 0.3 mm [.011 in]
Knurl: Yes
Vacuum-tight: No
RoHS-compliant: Yes

Wiring data

Insulating material:

PEEK

Mechanical data

Total length:
Outer diameter:

58.55 mm [2.3 in]
7.5 mm [.295 in]

Mounting hole

Mounting hole in CEM1:
Mounting hole in FR4:

7.5 - 7.52 mm [.295 - .296 in]
7.5 - 7.52 mm [.295 - .296 in]

INGUN Prüfmittelbau GmbH

Max-Stromeyer-Straße 162
78467, Constance, Germany
Phone +49 7531 8105-0
Customer hotline +49 7531 8105-888
Fax +49 7531 8105-65
info@ingun.com



Prices and delivery times on request.
Technical changes reserved. 06/26_GB

Learn more about
Test probes

