

Receptacle, gold-plated

KS-690 E01 M-BCP-N

Item KS-690-0001

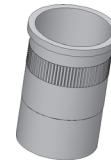


GO TO PRODUCT

ingun[®]

Partner for Future Technology

- Receptacle for BCP-690 M Series



1:1



General data

Product group:
Series:
Sub-series:
Type of receptacle connection:
Press ring:
Surface area:
Collar diameter:
Collar height:
Knurl:
Vacuum-tight:
RoHS-compliant:

Receptacles (KS)
KS-690

Plug / open
No
Nickel
6 mm [.236 in]
0.5 mm [.019 in]

Yes
No
Yes

Mechanical data

Total length: 8.5 mm [.334 in]
Outer diameter: 5.45 mm [.214 in]

Mounting hole

Mounting hole in CEM1: 5.45 - 5.47 mm [.214 - .215 in]
Mounting hole in FR4: 5.45 - 5.47 mm [.214 - .215 in]

INGUN Prüfmittelbau GmbH

Max-Stromeyer-Straße 162
78467, Constance, Germany
Phone +49 7531 8105-0
Customer hotline +49 7531 8105-888
Fax +49 7531 8105-65
info@ingun.com



Prices and delivery times on request.
Technical changes reserved. 06/26_GB

Learn more about
Test probes



RECEPTACLES

ingun.com